

1
12 N 1/4 cor sec. 12-T84N-R41W

Dug 3x3' trench 12' long in line with

fc. from S. Found nothing.

P.O.T. set 7-29-88 after

Ties set in brace posts on South side

Ties set in wood posts on North side with two iron posts between the two wood posts

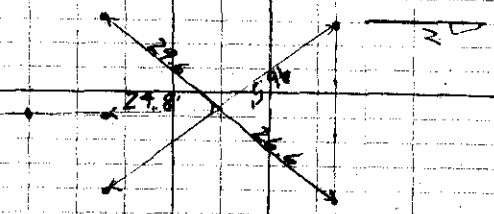
11
14 Found 1/2" iron rod 18" long and old walnut stake 18" long at depth of 24". Lowered & set C.M.

ties from x-spts

- 2.0 N of fence line E & W
- 26.7 ENE of 4th post west of cor
- 52.7 WNW of 6th post east of cor
- 10.6 SSW of 1st post North of cor
- South of New Grassata post

3
47.5

APR 11 1939



11
25

Found a set 5-12-42
Linniger & Munn
Chief - Claugroy

