

11-84-41
 N 1/4 Cor

This document prepared by : Semke & Associates - 712-792-2276
 Micheal G. Semke, L.S. #10318 - 716 N. Crawford St. - Carroll, Iowa

UNITED STATES PUBLIC LAND SURVEY CORNER CERTIFICATE of
 Land Survey Monuments situated in Section 11, Township 84 North, Range 41
 West, of the Fifth Principal Meridian, Crawford County, Iowa.
 Previously recorded in Book , Page in County Recorder's Office.

(Show reason for preparing this certificate, the evidence and detailed procedures used in establishing the corner positions and monumentation found or placed.)

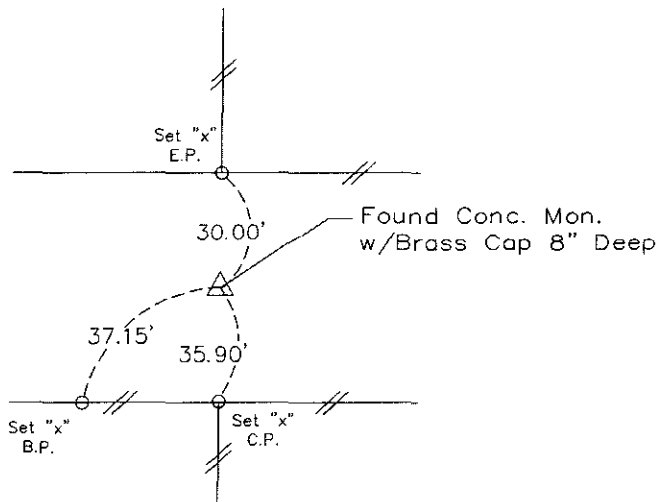
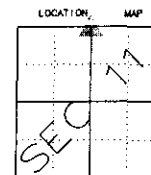
N 1/4 Corner Found Conc. Mon. w/Brass Cap 8" Deep

Note: All pins set are 1/2" x 24" Rerod w/Yellow Cap #10318 unless noted otherwise.

PLAN - VIEW

(Show a minimum of three reference ties to durable physical objects, relevant monuments and physical conditions that will enable recovery of the corner.)

N 1/4 Cor
 11-84-41



Note: all ties slope chained unless noted otherwise.

LICENSED LAND SURVEYOR
 MICHEAL G. SEMKE
 10318
 IOWA

I HEREBY CERTIFY THAT THIS LAND SURVEYING DOCUMENT WAS PREPARED AND RELATED SURVEY WORK WAS PERFORMED BY ME OR UNDER MY DIRECT PERSONAL SUPERVISION AND THAT I AM A DULY LICENSED LAND SURVEYOR UNDER THE LAWS OF THE STATE OF IOWA

M. G. Semke 5/11/08
 Signature Date

Micheal G. Semke, L.S. No. 10318
 Printed or Typed Name

List Corners to be Indexed

Corners	Section	Twp	Range
N 1/4 Cor	11	84	41
S 1/4 Cor	2	84	41

Pages or sheets covered by this seal THIS PAGE My license renewal date is 12/31/09.