

COPY

Crawford County Recorder
Denise Meeves
Fee Book 2009-1747

06/26/2009 @12:45PM
PLC PLAT CORNER CER
Book: Page: # Pages: 1
Total Fees: \$7.00

INDEXED NAME
FOLLOW UP _____
PROOFED _____
SCANNED _____

WILKE LAND SURVEYING INC. 401 1800th Street Panama, Iowa 51562 (712)489-2898

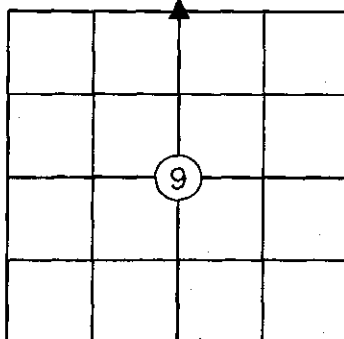
UNITED STATES PUBLIC LAND SURVEY CORNER CERTIFICATE

SECTION 9 TOWNSHIP 82N RANGE 41W COUNTY CRAWFORD

Certificate Prepared For: (No record Corner Certificate for this Corner.)

Monument Description and Remarks:

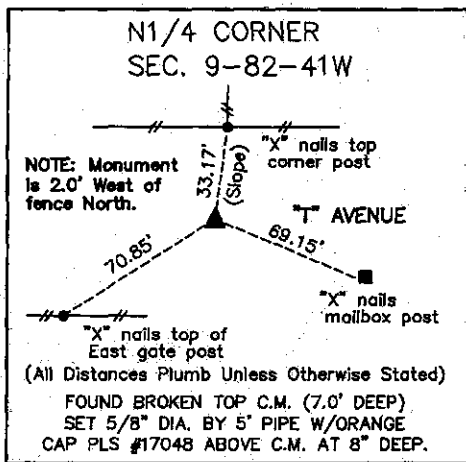
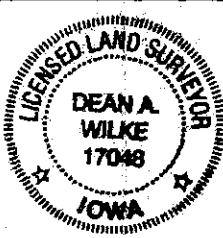
Dug with backhoe and found broken top concrete monument (7.0' deep) in road. Set 5/8" dia. by 5' pipe w/orange cap PLS #17048 above C.M. at 8" below road surface.



I hereby certify that this land surveying document was prepared and the related survey work was performed by me or under my direct personal supervision and that I am a duly licensed Land Surveyor under the laws of the State of Iowa.

Dean A. Wilke 6/02/09
Dean A. Wilke Date

License number 17048
My license renewal date is December 31, 2009
Pages or sheets covered by this seal: This page only



List Corners to be Indexed			
Corner	Section	Twp.	Range
N1/4 CORNER	9	82N	41W