

2003 SEP 23 AM 8:33

INST. NO. 2003-3709

DENISE MEYERS, RECORDER

Denise Meyers

FEE: no fee Mary Giten, Deputy

PREPARED BY: MICKAEL BERNDT
CRAWFORD COUNTY ENGINEERS OFFICE - COURTHOUSE - DENISON, IA. - 712-263-2449

UNITED STATES PUBLIC LAND SURVEY CORNER CERTIFICATE OF

LAND SURVEY MONUMENT SITUATED IN BOYER TOWNSHIP, THE WEST 1/4 CORNER
OF SECTION 9, T-82N, R-41W OF THE 5TH P.M. CRAWFORD COUNTY, IOWA. ✓

MONUMENT DESCRIPTION AND REMARKS

WEST 1/4 CORNER SEC. 9-82-41

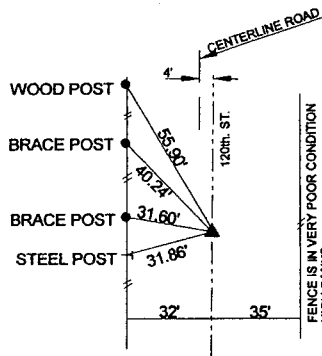
This corner was not set by the government surveyors during the original survey of Boyer Township. The road was originally established in 1874, and in 1954 Crawford County graded the road under Project No. 54-3 and filed it in the auditors office as Road Petition No. 1633. At that time the road was established on a straight line between the Northwest Corner and the Southwest Corner. A point was called for in the plan at a split of the distances between the two Corners. The split was in line with a property fence ranging to the east. I established the West 1/4 Corner by splitting the distance between the two section corners and on a straight line. The fence ranging to the east is gone.

SET 5/8" DIA. X 14" REBAR WITH YELLOW CAP #14808 6" DEEP

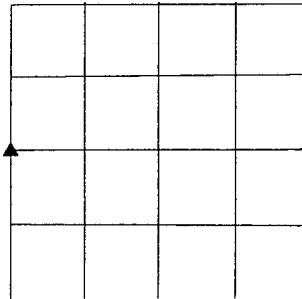
PLAN VIEW SHOWING RELATIVE LOCATION OF MONUMENT AND REFERENCE POINTS.

WEST 1/4 CORNER SEC. 9-82-41
SET 5/8" DIA. X 14" REBAR WITH
YELLOW CAP #14808 6" DEEP

DISTANCES ARE SLOPED CHAINED
TIES TO WOOD POSTS ARE "X" NAILS



CORNER: WEST 1/4
SECTION: 9
TOWNSHIP: 82N
RANGE: 41W



I HEREBY CERTIFY THAT THIS LAND SURVEYING DOCUMENT WAS PREPARED
AND THE RELATED SURVEY WORK WAS PERFORMED BY ME OR UNDER MY
DIRECT PERSONAL SUPERVISION AND THAT I AM A DULY LICENSED LAND
SURVEYOR UNDER THE LAWS OF THE STATE OF IOWA.

Mickael F. Berndt

MICKAEL F. BERNDT
IA. LICENSE NO. 14808

9-22-03

DATE
EXP. DATE 12-31-04

