


INDEXED MS 2071  
 FOLLOW UP \_\_\_\_\_  
 PROOFED \_\_\_\_\_  
 SCANNED \_\_\_\_\_

□ □   
 Crawford County Recorder Denise Meeves  
 Fee Book 2006-2935 RECD12253  
 10/17/2006 @1255PM # Pages 1  
 PLC PLAT CORNER CER  
 Total Fees: \$0.00

PREPARED BY: MICKAEL BERNDT  
 CRAWFORD COUNTY ENGINEERS OFFICE - COURTHOUSE - DENISON, IA. - 712-263-2449

**UNITED STATES PUBLIC LAND SURVEY CORNER CERTIFICATE  
 OF**

LAND SURVEY MONUMENT SITUATED IN BOYER TOWNSHIP, THE NORTHWEST  
 CORNER OF SECTION 8, T-82N, R-41W OF THE 5TH P.M. CRAWFORD COUNTY, IOWA.

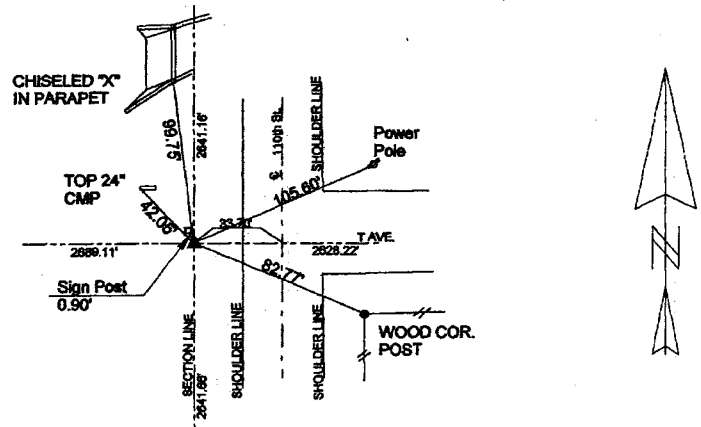
PREVIOUSLY RECORDED AS NO. 2006-0739

**MONUMENT DESCRIPTION AND REMARKS**

NORTHWEST CORNER SEC. 8-82-41  
 MAR. 20, 2006  
 ACCORDING TO THE RECORDS IN THE COUNTY ENGINEERS OFFICE NO MONUMENT WAS SET AT THIS  
 LOCATION. THE CORNER WAS ESTABLISHED USING THE DISTANCE TO THE QUARTER CORNERS AND  
 ROAD PETITION NO. 916 WHICH STATED THAT THE CENTERLINE OF THE ROAD WAS ESTABLISHED 33' EAST  
 OF THE SECTION CORNER. A 5/8" X 14" REBAR WITH A YELLOW CAP NO. 14808 WAS SET TO THE  
 SURFACE AND TIED OFF.

Oct. 12, 2006  
 The cor. was tied off and the bridge was replaced with a twin box culvert. After construction was  
 completed the corner was set back and retied. Set 5/8" X 14" rebar 3" deep with yellow cap #14808.

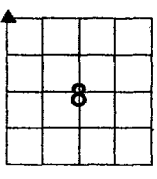
NORTHWEST CORNER SEC. 8-82-41



ALL DISTANCES ARE SLOPED CHAINED

All ties are "X" nails unless otherwise noted.

CORNER: NORTHWEST  
 SECTION: 8  
 TOWNSHIP: 82N  
 RANGE: 41W



**CERTIFICATION:**

I HEREBY CERTIFY THAT THIS LAND SURVEYING DOCUMENT WAS PREPARED AND THE RELATED  
 SURVEY WORK WAS PERFORMED BY ME OR UNDER MY DIRECT PERSONAL SUPERVISION AND  
 THAT I AM A DULY LICENSED LAND SURVEYOR UNDER THE LAWS OF THE STATE OF IOWA.

Mickael F. Berndt 10-3-06  
 Signature Date of Survey  
 Mickael F. Berndt 14808 Dec. 31, 2006  
 Typed Name L.S. No. License Renewal Date

Pages covered by this seat 1

