

Crawford County Recorder
Denise Meeves
Fee Book 2010-2414

11/01/2010 @04:13PM
PLC PLAT CORNER CER
Book: Page: # Pages: 1
Total Fees: \$9.00

INDEXED
FILED
PLAT CORNER CER
NOV 1 2010

WILKE LAND SURVEYING INC. 401 1800th Street Panama, Iowa 51562 (712)489-2898

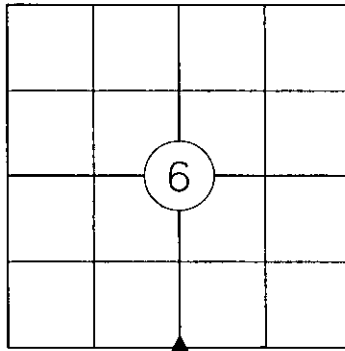
UNITED STATES PUBLIC LAND SURVEY CORNER CERTIFICATE

SECTION 6 TOWNSHIP 82N RANGE 41W COUNTY CRAWFORD

Certificate Prepared For: A RESET MONUMENT

Monument Description and Remarks:

Erosion and the County grader on this dirt road combined to remove the rebar and cap set in the year 2006 by PLS #14808. With the road grade getting lower the record ties would not cross. Used a combination of the tie distances and the distance to the SE Corner of the Section to reset a monument at this corner. Set a 5/8" dia. rebar w/orange cap PLS #17048 (1.1' deep).



LICENSED LAND SURVEYOR

DEAN A. WILKE

17048

IOWA

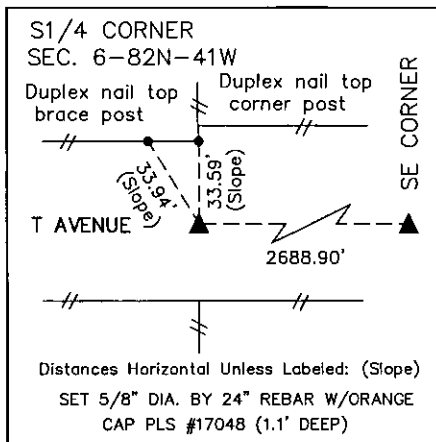
I hereby certify that this land surveying document was prepared and the related survey work was performed by me or under my direct personal supervision and that I am a duly licensed Land Surveyor under the laws of the State of Iowa.

Dean A. Wilke 10/28/10
Dean A. Wilke Date

License number 17048

My license renewal date is December 31, 2011

Pages or sheets covered by this seal: This page only



List Corners to be Indexed			
Corner	Section	Twp.	Range
S1/4 CORNER	6	82N	41W