

INDEXED VX
 FOLLOW UP _____
 PROOFED _____
 SCANNED _____

Instrument #: 2018-1097
 05/23/2018 02:23:30 PM Total Pages: 1
 PLC PLAT CORNER CER
 Recording Fee: \$7.00 Transfer Tax: \$0
 Denise Meeves, Recorder, Crawford County Iowa



WILKE LAND SURVEYING INC. 401 1800th Street Panama, Iowa 51562 (712)489-2898

UNITED STATES PUBLIC LAND SURVEY CORNER CERTIFICATE

SECTION 5 TOWNSHIP 82N RANGE 41W COUNTY CRAWFORD

Monument Description and Remarks:

Reason for Certificate: Survey in the SW1/4

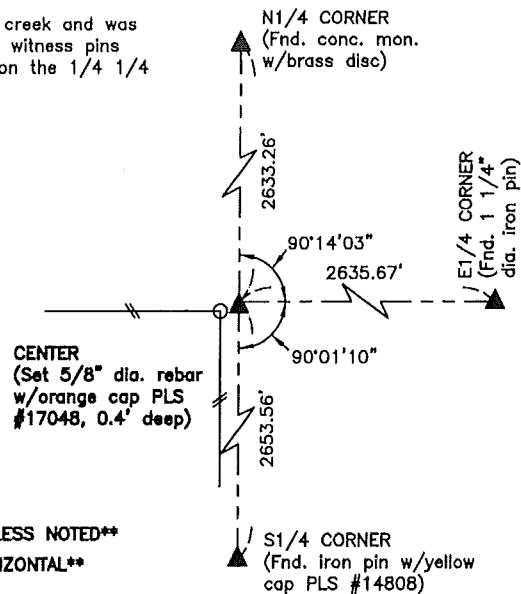
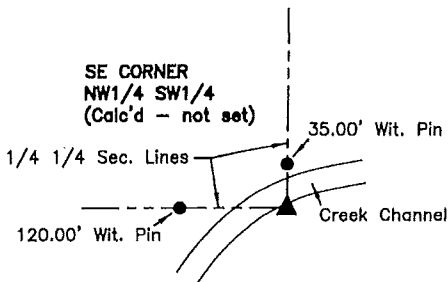
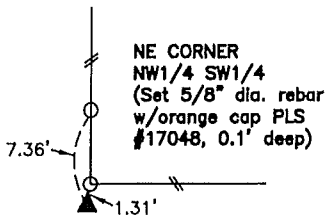
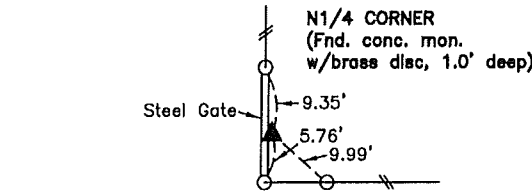
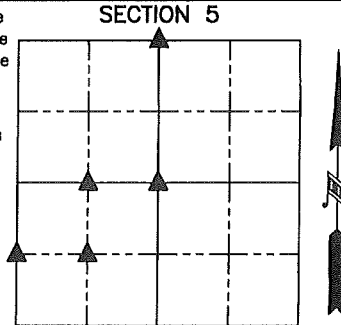
N1/4 CORNER - Trees and the fence ridge in the area have been bulldozed, and the monument set by PLS #6806 above the concrete monument was destroyed. Found the concrete monument with a brass disc (1.0' deep). Placed a 5/8" dia. rebar along the East side of the monument for detection purposes only.

CENTER - Set a 5/8" diameter by 24" long rebar with an orange cap PLS #17048 (0.4' deep) on the Northeasterly side of the corner post at the intersection of fences West and South. The wood posts in said fences are rotted off and falling over. No suitable ties available.

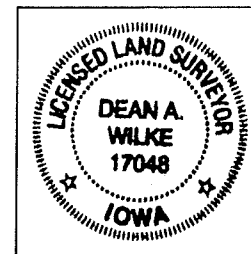
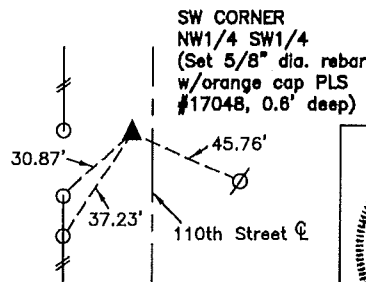
NE CORNER NW1/4 SW1/4 - Set a 5/8" diameter by 24" long rebar with an orange cap PLS #17048 (0.1' deep) on the North line of the Southwest Quarter and in line with the fence North.

SW CORNER NW1/4 SW1/4 - Set a 5/8" diameter by 24" long rebar with an orange cap PLS #17048 (0.6' deep) at the midpoint of the West line of the Southwest Quarter. The monument is ±6.3' West of the physical centerline of 110th Street.

SE CORNER NW1/4 SW1/4 - The calculated Corner location is in a creek and was not set. Set 5/8" diameter rebars with orange caps PLS #17048 as witness pins 35.00' Northerly on the 1/4 1/4 Section line and 120.00' Westerly on the 1/4 1/4 Section line.



****ALL TIES ARE "X" NAILS UNLESS NOTED****
****ALL DISTANCES ARE HORIZONTAL****



List Corners to be Indexed			
Corner	Section	Twp.	Range
N1/4 CORNER	5	82N	41W
CENTER	5	82N	41W
NE CORNER NW1/4 SW1/4	5	82N	41W
SW CORNER NW1/4 SW1/4	5	82N	41W
SE CORNER NW1/4 SW1/4	5	82N	41W

I hereby certify that this land surveying document was prepared and the related survey work was performed by me or under my direct personal supervision and that I am a duly licensed Land Surveyor under the laws of the State of Iowa.

Dean A. Wilke 5/23/18
 Dean A. Wilke Date

License number 17048

My license renewal date is December 31, 2019

Pages or sheets covered by this seal: This page only