

W
 I
 L
 K
 E
 S
 U
 R
 V
 E
 Y
 I
 N
 G
 I
 N
 C.

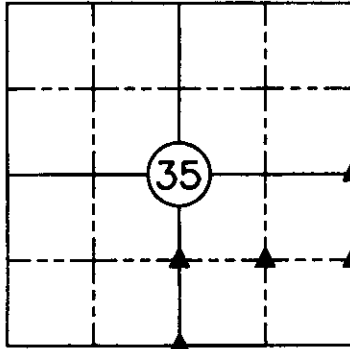
WILKE LAND SURVEYING INC. 401 1800th Street Panama, Iowa 51562 (712)489-2898

UNITED STATES PUBLIC LAND SURVEY CORNER CERTIFICATE

SECTION 35 TOWNSHIP 82N RANGE 41W COUNTY CRAWFORD

Monument Description and Remarks:
 -SW Corner, SW1/4 SE1/4: Found 1/2" dia. by 3.5' iron pin w/square nut, 1' deep that was set in a 1906 record Survey of Lot 1 & Lot 2 of the SE1/4 SW1/4.
 -NW Corner, SW1/4 SE1/4: Found 1 1/4" dia. by 4' gas pipe, 1.8' deep that was set in a 1906 record Survey of Lot 1 & Lot 2 of the SE1/4 SW1/4.
 -SW Corner, NE1/4 SE1/4: Set 5/8" dia. by 24" rebar w/orange cap PLS #17048, flush on the East side of the fence corner post.
 -NE Corner, SE1/4 SE1/4: Set 5/8" dia. by 24" rebar w/orange cap PLS #17048, flush on the North side of the fence corner post.
 -E1/4 Corner: Set 5/8" dia. by 24" rebar w/orange cap PLS #17048, flush on the East side of the fence corner post.

(No record Certificates)



NW CORNER, SW1/4 SE1/4
 SECTION 35, T82N, R41W
 (Fnd. 1 1/4" dia. by 4' gas pipe 1906 Survey)

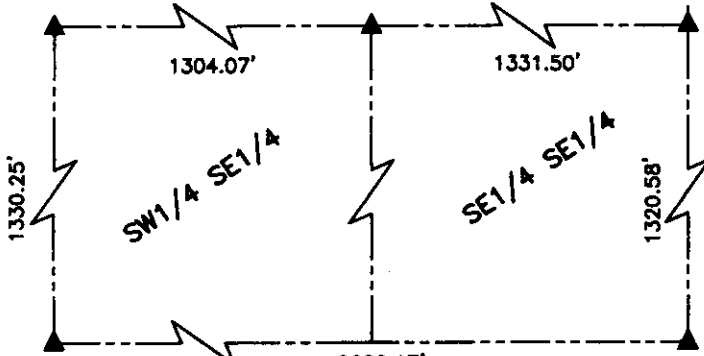
SW CORNER, NE1/4 SE1/4
 SECTION 35, T82N, R41W
 (Set 5/8" rebar w/orange cap PLS #17048)

E1/4 CORNER
 SECTION 35, T82N, R41W
 (Set 5/8" rebar w/orange cap PLS #17048)

Ties:
 -4.27' Southwest of "X" nails in newer corner fence post.
 -13.53' Southwest of "X" nails in newer brace post.
 -22.56' Southwest of "X" nails in East gate post in fence East.
 -2.3' West of fence South.

Ties:
 -0.11' East of "X" nails in corner fence post.
 -0.99' Southeast of "X" nails in end post of fence North.
 -10.34' South of "X" nails in brace post.

Ties:
 -Along the East side of a composite end fence post.
 -1.43' East of "X" nails top of end post fence West.
 -10.42' East of "X" nails top of brace post fence West.



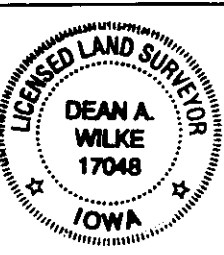
NE CORNER, SE1/4 SE1/4
 SECTION 35, T82N, R41W
 (Set 5/8" rebar w/orange cap PLS #17048)

Ties:
 -0.66' North of "X" nails in corner fence post.
 -7.88' South of "X" nails West face of brace post.
 -10.34' West of "X" nails in gate post.

SE CORNER
 SE1/4
 SECTION 35, T82N, R41W
 (Fnd. iron pin w/yellow cap PLS #8893)

SW CORNER, SW1/4 SE1/4
 SECTION 35, T82N, R41W
 (Fnd. 1/2" dia. by 3.5' iron pin with square nut, 1906 Survey)

Ties:
 -1' North of East-West fence
 -18.23' Northwest of "X" nails fence post.
 -19.91' Northeast of "X" nails in fence post.
 -32.29' Easterly of 5/8" rebar w/yellow cap PLS #8893



I hereby certify that this land surveying document was prepared and the related survey work was performed by me or under my direct personal supervision and that I am a duly licensed Land Surveyor under the laws of the State of Iowa.

Dean A. Wilke 12/31/12
 Dean A. Wilke Date

License number 17048
 My license renewal date is December 31, 2013
 Pages or sheets covered by this seal: This page only

List Corners to be Indexed				
Corner	Section	Twp.	Range	
SW CORNER, SW1/4 SE1/4	35	82N	41W	
NW CORNER, SW1/4 SE1/4	35	82N	41W	
SW CORNER, NE1/4 SE1/4	35	82N	41W	
NE CORNER, SE1/4 SE1/4	35	82N	41W	
E1/4 CORNER	35	82N	41W	