

INDEXED Am
 FOLLOW UP _____
 PROOFED _____
 SCANNED _____

Instrument #: 2016-2575
 12/14/2016 11:20:25 AM Total Pages 1
 PLC PLAT CORNER CER
 Recording Fee: \$7.00 Transfer Tax: \$0
 Denise Meeves, Recorder, Crawford County Iowa



WILKE LAND SURVEYING INC. 401 1800th Street Panama, Iowa 51562 (712)489-2898

UNITED STATES PUBLIC LAND SURVEY CORNER CERTIFICATE

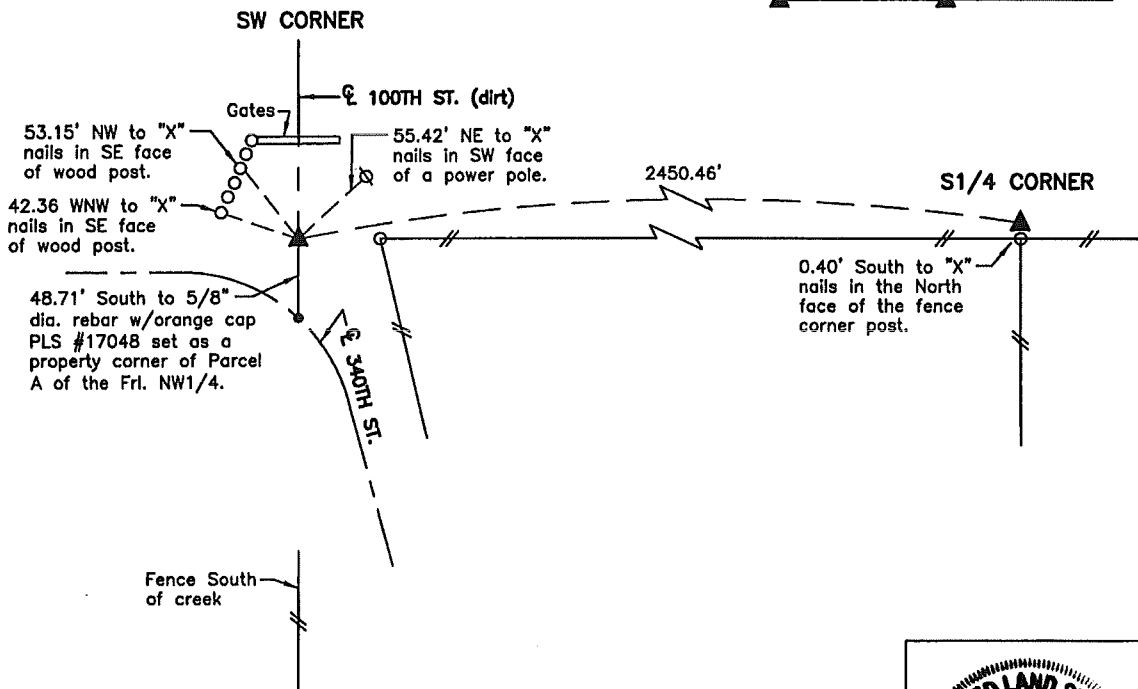
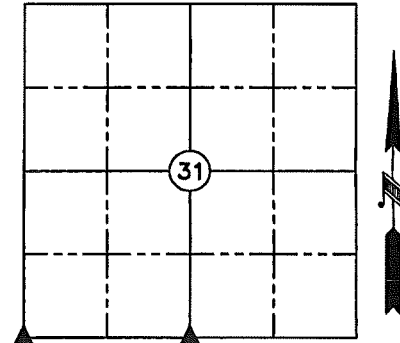
SECTION 31 TOWNSHIP 82N RANGE 41W COUNTY CRAWFORD

Reason for Certificate: Survey in FRL. NW1/4 Sec. 6-T81N-R41W

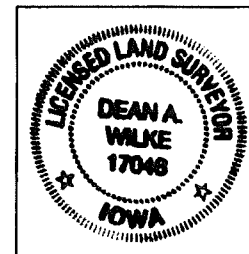
Monument Description and Remarks:

SW CORNER - Location is in a road cut area with no metal detection found. Set a 5/8" diameter by 24" long rebar with an orange cap PLS #17048 (0.8' deep) at the intersection of fences from the South (South of the creek) and from the East. The monument location fits well with the centerline of the Level C Minimum Maintenance Road to the North.

S1/4 CORNER - Corner was not monumented by the WPA survey crew according to field book notes at the County Engineer's Office. Set a 5/8" diameter by 24" long rebar with an orange cap PLS #17048 (flush) on the North side of a corner post with fences West, East, and South.



(ALL DISTANCES ARE HORIZONTAL)



I hereby certify that this land surveying document was prepared and the related survey work was performed by me or under my direct personal supervision and that I am a duly licensed Land Surveyor under the laws of the State of Iowa.

Dean A. Wilke 12/12/16
 Dean A. Wilke Date

License number 17048

My license renewal date is December 31, 2017

Pages or sheets covered by this seal: This page only

List Corners to be Indexed			
Corner	Section	Twp.	Range
SW CORNER	31	82N	41W
S1/4 CORNER	31	82N	41W