

INDEXED
 FOLLOW UP
 PROOFER
 SCANER

Instrument #: 2016-0975
 05/13/2016 10:00:37 AM Total Pages: 1
 PLC PLAT CORNER CER
 Recording Fee: \$7.00 Transfer Tax: \$0
 Denise Heeves, Recorder, Crawford County Iowa



WILKE LAND SURVEYING INC. 401 1800th Street Panama, Iowa 51562 (712)489-2898

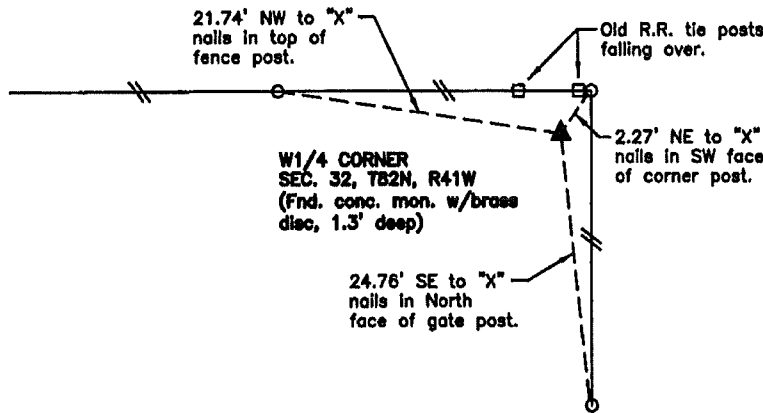
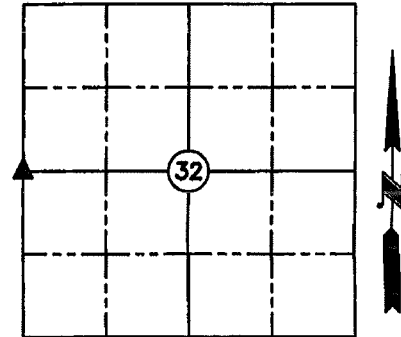
UNITED STATES PUBLIC LAND SURVEY CORNER CERTIFICATE

SECTION 32 TOWNSHIP 82N RANGE 41W COUNTY CRAWFORD

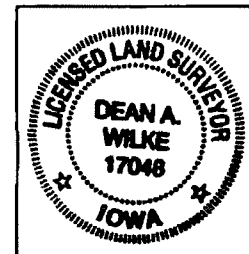
Reason for Certificate: Survey in the NW1/4 NW1/4

Monument Description and Remarks:

W1/4 CORNER - Found concrete monument with brass disc (1.3' deep). Placed 5/8" diameter rebar along the East side of the monument for detection purposes only. The monument is +/- 1.0' West of the fence South and +/- 2.0' South of the fence West.



IGN GN GEODETIC COORDINATES
 DATUM - NAD 83 (2011)
 LATITUDE LONGITUDE
 41°52'13.79564"N 95°39'14.12855"W



(ALL DISTANCES ARE HORIZONTAL)

List Corners to be Indexed			
Corner	Section	Twp.	Range
W1/4 CORNER	32	82N	41W

I hereby certify that this land surveying document was prepared and the related survey work was performed by me or under my direct personal supervision and that I am a duly licensed Land Surveyor under the laws of the State of Iowa.

Dean A. Wilke 5/11/16
 Dean A. Wilke Date

License number 17048

My license renewal date is December 31, 2017

Pages or sheets covered by this seal: This page only