

PREPARED BY - TERENCE E. CRAWFORD - SUNDSQUIST ENGINEERING - 120 S. MAIN, DENISON, IOWA 51442 - PHONE (712) 263-8118

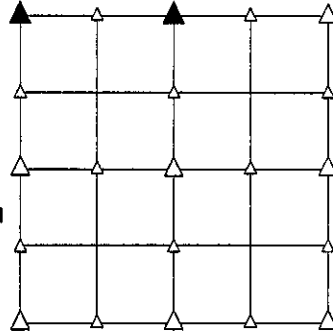
UNITED STATES PUBLIC LAND SURVEY CORNER CERTIFICATE OF

LAND SURVEY MONUMENT SITUATED IN SECTION 1, T 82 N, R 41 W OF
 THE 5TH P.M., CRAWFORD COUNTY, IOWA.
 PREVIOUSLY RECORDED IN BOOK _____, PAGE _____, OTHER _____

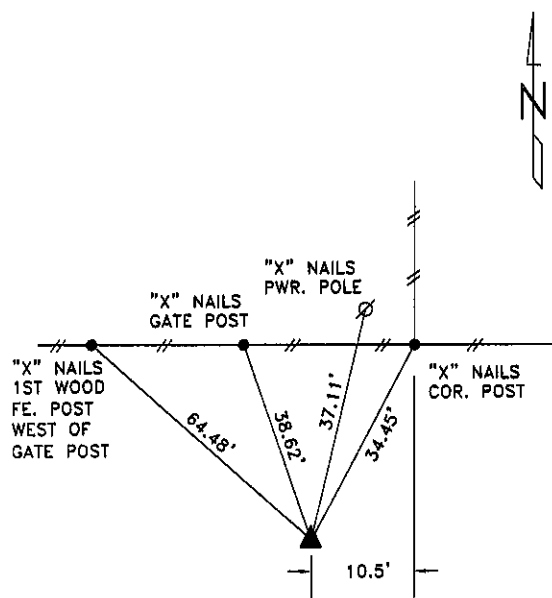
MONUMENT DESCRIPTION AND REMARKS

NW CORNER - FOUND 1" DIA. IRON PIN 1.9' DEEP, RAISED WITH
 5/8" DIA. X 18" IRON PIN W/YELLOW CAP #8893
 0.4' DEEP.

N1/4 CORNER - SET 5/8" DIA. X 18" IRON PIN W/YELLOW CAP
 #8893 0.5' DEEP, SET ON LINE & AT SPLIT BETWEEN
 NW COR. & NE COR OF SECTION 1.

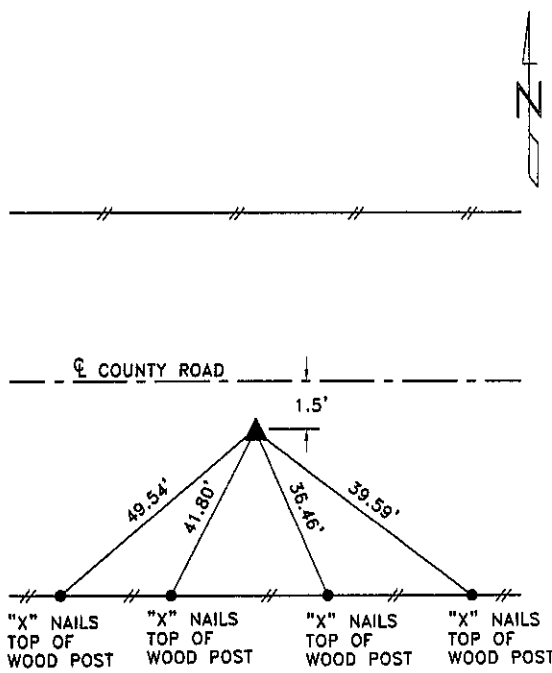


PLAN VIEW SHOWING RELATIVE LOCATION OF MONUMENT AND REFERENCE POINTS.



DISTANCES PLUMB CHAINED

NW CORNER SECTION 1-82-41

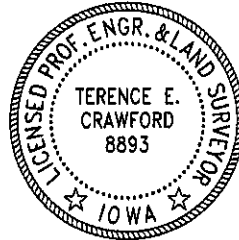


DISTANCES PLUMB CHAINED

N1/4 CORNER SECTION 1-82-41

HEREBY CERTIFY THAT THIS LAND SURVEYING DOCUMENT WAS PREPARED
 AND THE RELATED SURVEY WORK WAS PERFORMED BY ME OR UNDER MY
 DIRECT PERSONAL SUPERVISION AND THAT I AM A DULY LICENSED LAND
 SURVEYOR UNDER THE LAWS OF THE STATE OF IOWA.

Terence E. Crawford
 TERENCE E. CRAWFORD
 A LICENSE NO. 8893
 DATE
 JAN 28 2008
 EXP. DATE DECEMBER 31, 2009



SE PROJECT NO. 20308
 DRAWN BY: LLL