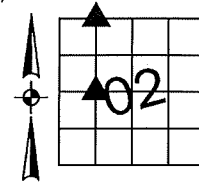


Denise Meeves RECORDER
 Crawford County, Iowa
 Instr. Number: 2022-0437
 Recorded: 2/15/2022 at 3:34:51.0 PM
 Pages 1
 County Recording Fee: \$7.00
 Iowa E-Filing Fee: \$3.13
 Combined Fee: \$10.13
 Revenue Tax:

PREPARED BY AND RETURN TO: MIKE SCHULTE, SCHULTE SURVEYING, INC., 2003 390TH STREET, WESTSIDE, IA 51467 (712) 790-3489

UNITED STATES PUBLIC LAND SURVEY CORNER CERTIFICATE OF

LAND SURVEY MONUMENTS SITUATED IN SECTION 02, TOWNSHIP 83 NORTH, RANGE 38 WEST, OF THE FIFTH PRINCIPAL MERIDIAN, CRAWFORD COUNTY, IOWA. PREVIOUSLY RECORDED IN SEE BELOW IN COUNTY RECORDER'S OFFICE.
(book, page instrument number)

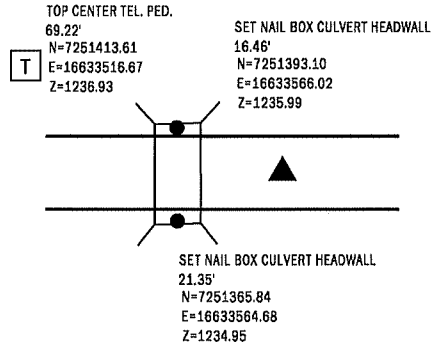
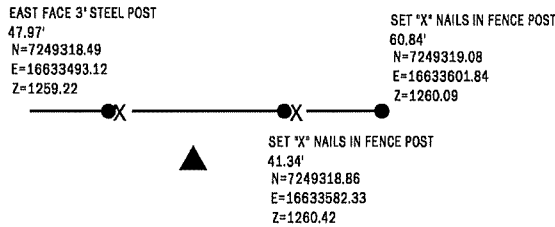


SW CORNER SE14 NW FRL1/4
 SET 5/8" REBAR YPC #17979
 N=7249316.73 E=16633541.05

NW CORNER NE1/4 NW FRL1/4
 SET 5/8" REBAR YPC #17979
 N=7251382.21 E=16633578.36

NO RECORD OF CORNER. SET 5/8" REBAR YPC #17979 BY SINGLE PROPORTION.
 THIS CERTIFICATE IS BEING FILED BECAUSE THERE IS NO CERTIFICATE OF RECORD.

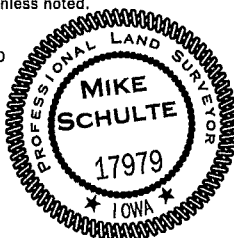
NO RECORD OF CORNER. SET 5/8" REBAR YPC #17979 BY SINGLE PROPORTION.
 THIS CERTIFICATE IS BEING FILED BECAUSE THERE IS NO CERTIFICATE OF RECORD.



*All distances are measured horizontally unless noted.

I HEREBY CERTIFY THAT THIS LAND SURVEYING DOCUMENT WAS PREPARED BY ME OR UNDER MY DIRECT PERSONAL SUPERVISION AND THAT I AM A DULY LICENSED PROFESSIONAL LAND SURVEYOR UNDER THE LAWS OF THE STATE OF IOWA.

Mike Schulte
 MIKE SCHULTE
 LICENSE NUMBER: 17979
 LICENSE RENEWAL DATE IS DECEMBER 31, 2023
 PAGES COVERED BY THIS SEAL: 1 OF 1
 DATE: 2022/02/14



LIST CORNERS TO BE INDEXED
 CORNER SECTION TWP RANGE

SW CORNER SE14 NW FRL1/4	02	83	38
NW CORNER NE1/4 NW FRL1/4	02	83	38
SW CORNER SE1/4 SW1/4	35	84	38

BASIS OF BEARING

IaRCS ZONE 6 - US SURVEY FEET
 IaRTN DERIVED - NAD83(2011)(EPOCH 2010.00)

SCHULTE SURVEYING, INC.

DRAWN BY: MLS
 PROJ NUMBER: 21-091