

W. C. Hillhouse, Jr.
S.

Crawford County Recorder
Denise Reeves
Fee Book 2012-0699

03/28/2012 11:49AM
PLC PLAT CORNER CER # Pages: 1
Book; Page: \$7.00
Total Fees:

WARDER C. HILLHOUSE, JR. M.H.F. ENGINEERING P.C. 300 W. MCKINLEY JEFFERSON, IA (515)388-4101
UNITED STATES PUBLIC LAND SURVEY CORNER CERTIFICATE OF

Land Survey Monuments in Section 23 Township 82 Range 41
of the Fifth Principal Meridian, CRAWFORD County, Iowa.
Previously recorded in _____ in County Recorder's Office.
(book, page, document number, etc.)

(Show reason for preparing this certificate, the evidence and detailed procedures used in establishing the corner positions and monumentation found or placed.)

Monument Description and Remarks:

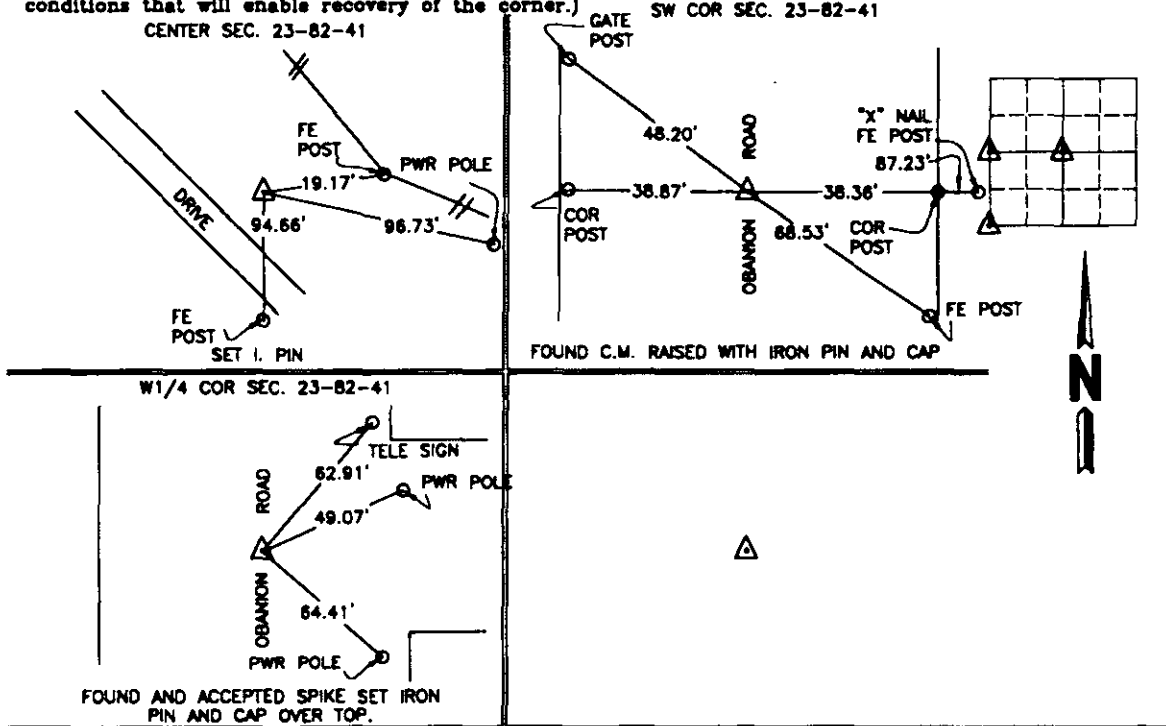
CENTER SEC. 23-82-41: SET IRON PIN USING CENTERLINE OF GRAVEL ROAD WEST EXTENDED TO THE EAST AND FENCE LINE TO THE SOUTH EXTENDED TO THE NORTH.

SW COR SEC. 23-82-41: HAD CRAWFORD COUNTY DIG CONCRETE MONUMENT FOUND MONUMENT 4 FEET DEEP. RAISED WITH IRON PIN AND CAP.

W1/4 COR SEC. 23-82-41: HAD SET OF ROAD PLANS FROM CRAWFORD COUNTY. SHOWED OLD TIES FROM BRIDGE THAT HAD BE REMOVED. FOUND SPIKE WITH FLAGGING, ACCEPTED AND SET IRON PIN OVER SPIKE.

PLAN - VIEW

(Show a minimum of three reference ties to durable physical objects, relevant monuments and physical conditions that will enable recovery of the corner.)



I hereby certify that this land surveying document and the related survey work was performed by me or under my direct personal supervision and that I am a duly licensed land surveyor under the laws of the state of Iowa.
Signature: Warder C. Hillhouse, Jr.
Warder C. Hillhouse, Jr.

Date: 3/27/12 Lic. No. 6806

License Renewal Dec. 31, 2013
Date Surveyed: 3/12



Seal

List Corners to be Indexed			
Corners	Section	Twp	Range
CENTER	23	82	41
SW COR	23	82	41
W1/4 COR	23	82	41

File No. 11185-2

M.H.F. ENGINEERING, P.C.
ENGINEERS - LAND SURVEYORS
Jefferson, Iowa 50129 Ph. (515)388-4101