

Instrument #: 2019-1485
 08/19/2019 11:24:08 AM Total Pages: 1
 PLC PLAT COR CERT
 Recording Fee: \$7.00 Transfer Tax: \$0
 Denise Meeves, Recorder, Crawford County Iowa



WILKE LAND SURVEYING INC. 401 1800th Street Panama, Iowa 51562 (712)489-2898

UNITED STATES PUBLIC LAND SURVEY CORNER CERTIFICATE

SECTION 27 TOWNSHIP 82N RANGE 41W COUNTY CRAWFORD

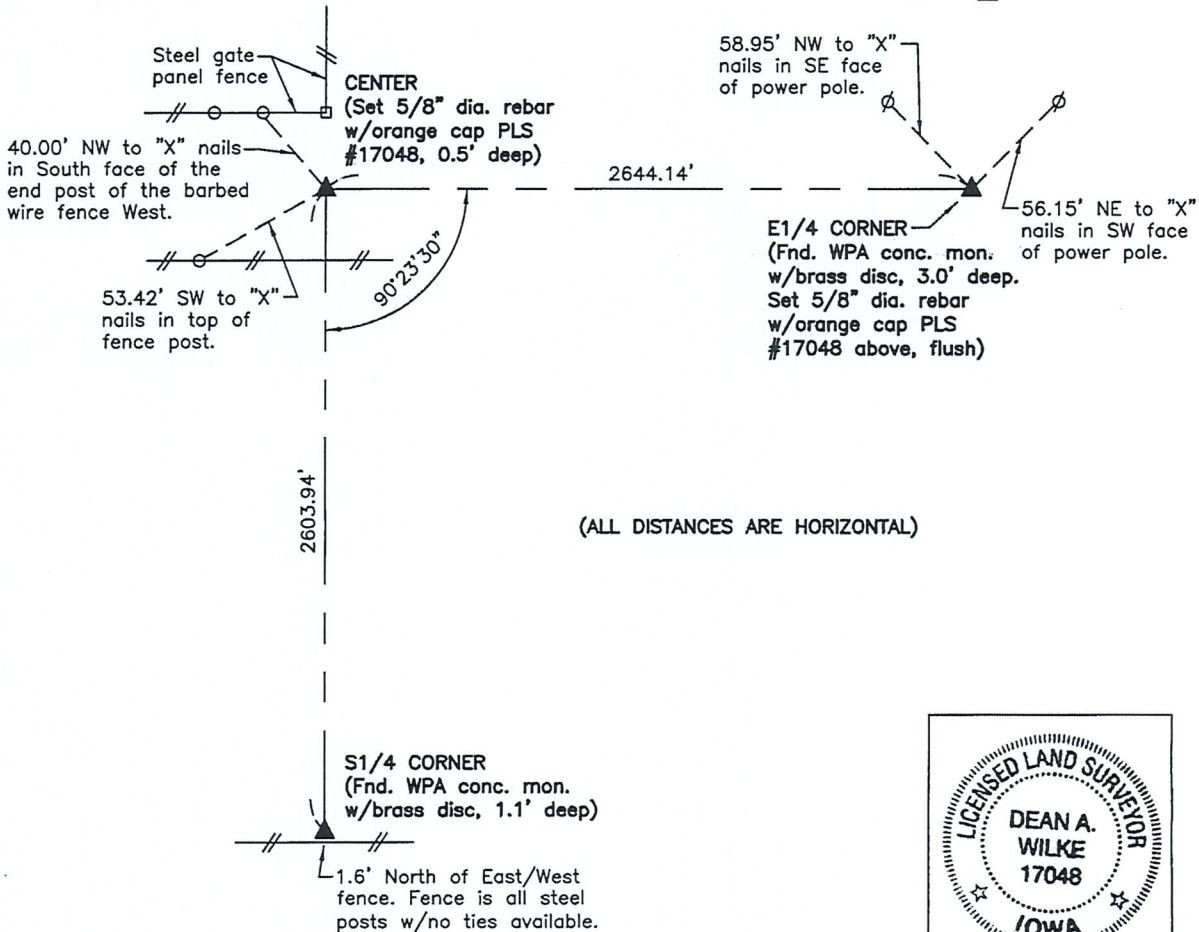
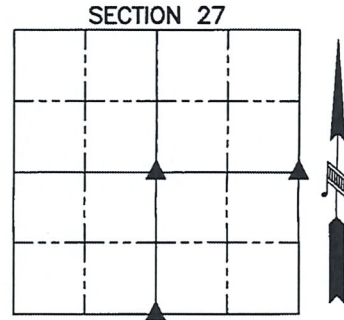
Monument Description and Remarks:

Reason for Certificate: Survey in the SE1/4

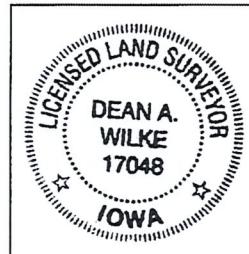
E1/4 CORNER – Dug a large hole with personal backhoe and found the WPA concrete monument with brass disc (3.0' deep). Drove a 5/8" diameter by 4' long rebar along the South side of the monument for detection purposes only. Set a 5/8" diameter by 3' long rebar with an orange cap PLS #17048 (flush) above the concrete monument.

S1/4 CORNER – Found the WPA concrete monument with brass disc (1.1' deep). Placed a 5/8" diameter rebar along the North side of the monument for detection purposes only. The monument is 1.6' North of the existing East/West fence. No suitable ties available.

CENTER – Set a 5/8" diameter by 24" long rebar with an orange cap PLS #17048 (0.5' deep) on the centerline of O'Banion Road and in line with the fence North.



(ALL DISTANCES ARE HORIZONTAL)



List Corners to be Indexed			
Corner	Section	Twp.	Range
E1/4 CORNER	27	82N	41W
S1/4 CORNER	27	82N	41W
CENTER	27	82N	41W

I hereby certify that this land surveying document was prepared and the related survey work was performed by me or under my direct personal supervision and that I am a duly licensed Land Surveyor under the laws of the State of Iowa.

Dean A. Wilke 8/16/19
 Dean A. Wilke Date

License number 17048

My license renewal date is December 31, 2019

Pages or sheets covered by this seal: This page only