

INDEXED me  
 FOLLOW UP \_\_\_\_\_  
 PROOFED \_\_\_\_\_  
 SCANNED \_\_\_\_\_

REC010256



Crawford County Recorder Denise Meeves  
 FEE BOOK 2006-1181 5/01/2006 @ 12:28PM  
 PLC PLAT CORNER CERBook: Page: #: 1  
 Total Fees: \$7.00

WARDER C. HILLHOUSE, JR. MHF ENGINEERING P.C. 300 W. MCKINLEY JEFFERSON, IA. (515)386-4101

**UNITED STATES PUBLIC LAND SURVEY CORNER CERTIFICATE OF**

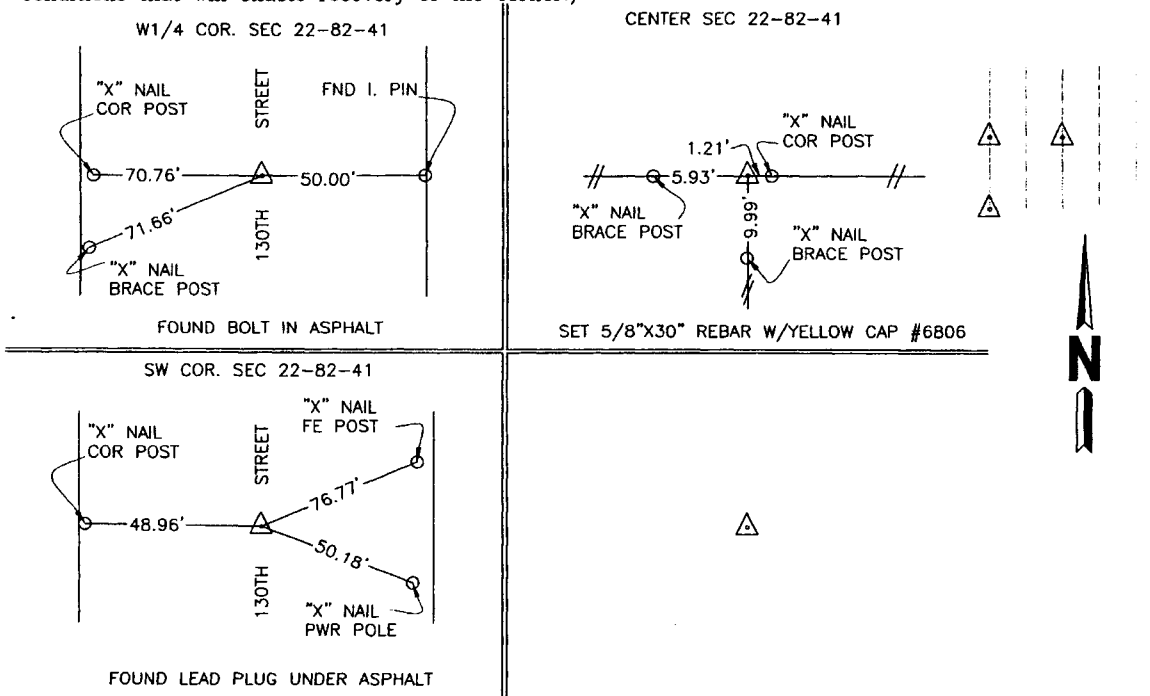
Land Survey Monuments in Section 22, Township 82, Range 41, of the Fifth Principal Meridian, CRAWFORD County, Iowa.  
 Previously recorded in \_\_\_\_\_ in County Recorder's Office.  
 (book, page, document number, etc.)

(Show reason for preparing this certificate, the evidence and detailed procedures used in establishing the corner positions and monumentation found or placed.)

Monument Description and Remarks:

**PLAN - VIEW**

(Show a minimum of three reference ties to durable physical objects, relevant monuments and physical conditions that will enable recovery of the corner.)



I hereby certify that this land surveying document and the related survey work was performed by me or under my direct personal supervision and that I am a duly licensed land surveyor under the laws of the state of Iowa.

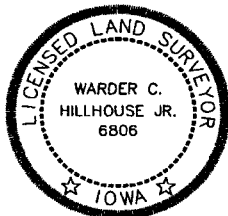
Signature: Warder C. Hillhouse, Jr.  
 Warder C. Hillhouse, Jr.

Date: 4/28/06 Lic. No. 6806

License Renewal Dec. 31, 2007

Date Surveyed: 04/18/06

Seal



List Corners to be Indexed

Corners	Section	Twp	Range
W1/4 COR.	22	82	41
CENTER	22	82	41
SW COR.	22	82	41

File No. 06069-1



M.H.F. ENGINEERING, P.C.  
 ENGINEERS - LAND SURVEYORS  
 Jefferson, Iowa 50129 Ph. (515)386-4101