

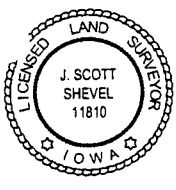
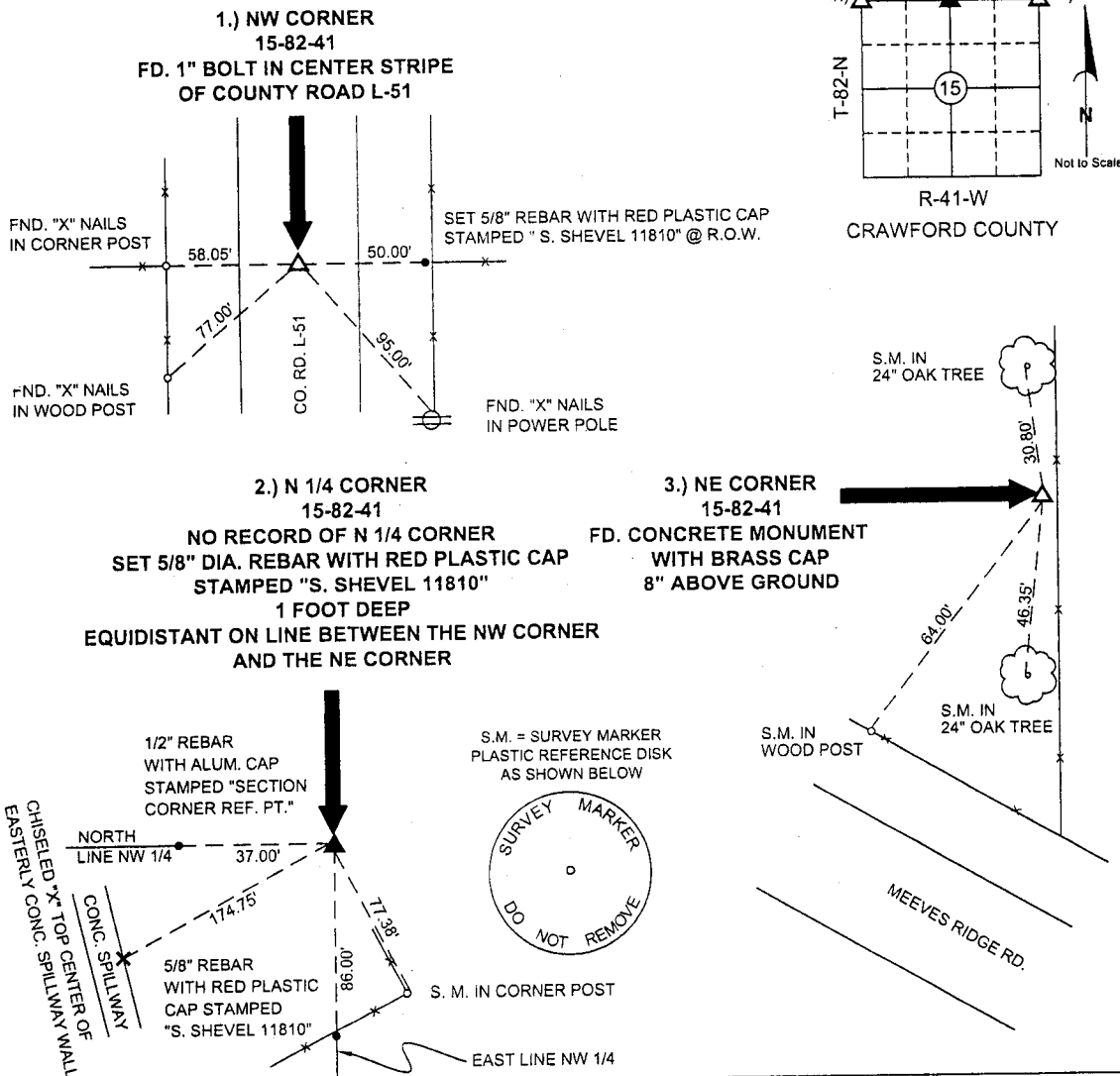
PREPARED BY: J. SCOTT SHEVEL L.S. KUEHL AND PAYER LTD., 423 WEST MAIN ST., SAC CITY, IA. 50583 PH. (712)662-7859

**UNITED STATES PUBLIC LAND SURVEY CORNER CERTIFICATE  
 OF**

LAND SURVEY MONUMENTS SITUATED IN SECTION 15, TOWNSHIP 82 NORTH,  
 RANGE 41 WEST, OF THE 5TH PRINCIPAL MERIDIAN, CRAWFORD COUNTY, IOWA.  
 PREVIOUSLY RECORDED IN BOOK \_\_\_\_\_ PAGE \_\_\_\_\_  
 MONUMENT DESCRIPTION AND REMARKS:

- 1.) NW CORNER 15-82-41: FND. 1" BOLT IN CENTER STRIPE OF COUNTY ROAD L-51
- 2.) N 1/4 CORNER 15-82-41: NO RECORD OF N 1/4 CORNER, SET 5/8" DIA. REBAR WITH RED PLASTIC CAP STAMPED "S. SHEVEL 11810" 1 FOOT DEEP; EQUIDISTANT ON A LINE BETWEEN THE NW CORNER OF SECTION 15 AND THE NE CORNER OF SECTION 15
- 3.) NE CORNER 15-82-41: FND. CONCRETE MONUMENT NEAR NORTH-SOUTH FENCE LINE 8" ABOVE GROUND

**PLAN - VIEW**



I hereby certify that this land surveying document was prepared and the related survey work was performed by me or under my direct personal supervision and that I am a duly licensed Land Surveyor under the laws of the State of Iowa.

*J. Scott Shevel 4/12/01*  
 J. Scott Shevel  
 License Number 11810  
 My license renewal date is December 31, 2001  
 Pages covered by this seal 1

Date: \_\_\_\_\_

List Corners to be Indexed

Corners	Section	Township	Range
1) NW	15	82	41
2) N 1/4	15	82	41
3) NE	15	82	41

PN: 010531  
 DRAWN: BKS