

2003 FEB 12 AM 9:55

DENISON, IOWA 51442

INST. NO. 2003-0508  
DENISE MEEVES, RECORDER  
*Denise Meeves*  
FEB 6 2003

INDEXED  
CORRECTED  
FILED

PREPARED BY - PAUL J. ASSMAN - LICENSED LAND SURVEYOR, 2720 HWY 141, DENISON, IOWA 51442 - PHONE (712)263-8747

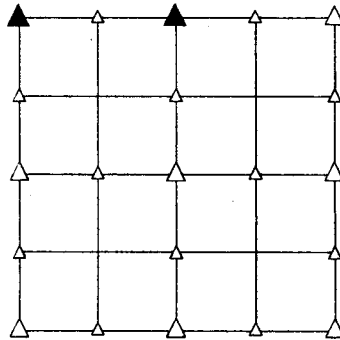
### UNITED STATES PUBLIC LAND SURVEY CORNER CERTIFICATE OF

LAND SURVEY MONUMENT SITUATED IN SECTION 12, T 82 N, R 41 W OF  
THE 5TH P.M., CRAWFORD COUNTY, IOWA.  
PREVIOUSLY RECORDED IN BOOK \_\_\_\_\_, PAGE \_\_\_\_\_, OTHER \_\_\_\_\_

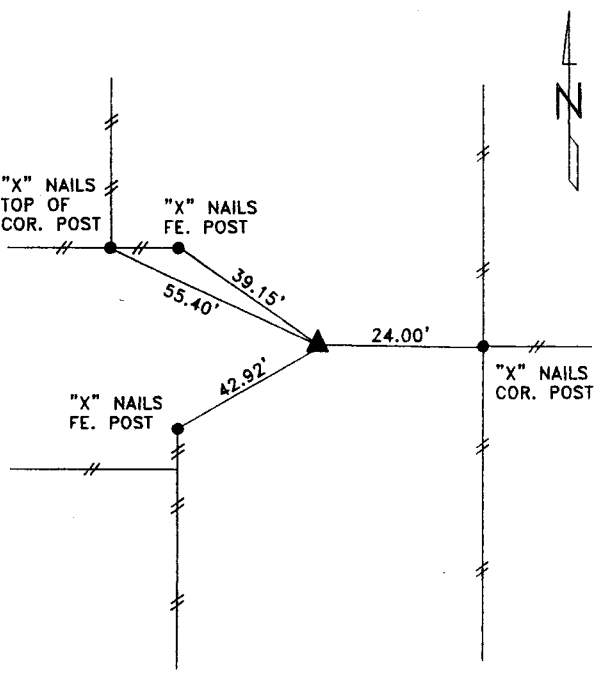
#### MONUMENT DESCRIPTION AND REMARKS

NW CORNER - FOUND 5/8" DIA. REBAR 8" DEEP.

N1/4 CORNER - FOUND CM 2" ABOVE GROUND.

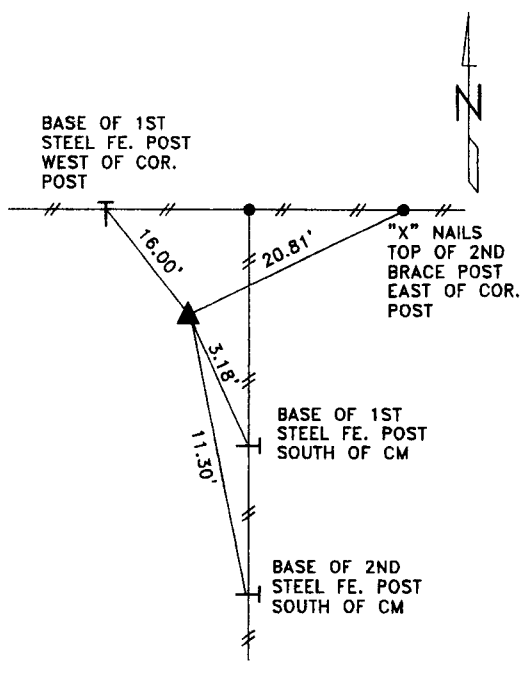


#### PLAN VIEW SHOWING RELATIVE LOCATION OF MONUMENT AND REFERENCE POINTS.



DISTANCES SLOPE CHAINED

NW CORNER SECTION 12-82-41



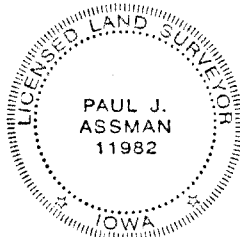
DISTANCES SLOPE CHAINED

N1/4 CORNER SECTION 12-82-41

I HEREBY CERTIFY THAT THIS LAND SURVEYING DOCUMENT WAS PREPARED AND THE RELATED SURVEY WORK WAS PERFORMED BY ME OR UNDER MY DIRECT SUPERVISION AND THAT I AM A DULY LICENSED LAND SURVEYOR UNDER THE LAWS OF THE STATE OF IOWA.

*Paul J. Assman* 2/11/03  
\_\_\_\_\_  
PAUL J. ASSMAN

DATE  
EXP. DATE DECEMBER 31, 2004



DRAWN BY: LLL

IA LICENSE NO. 11982