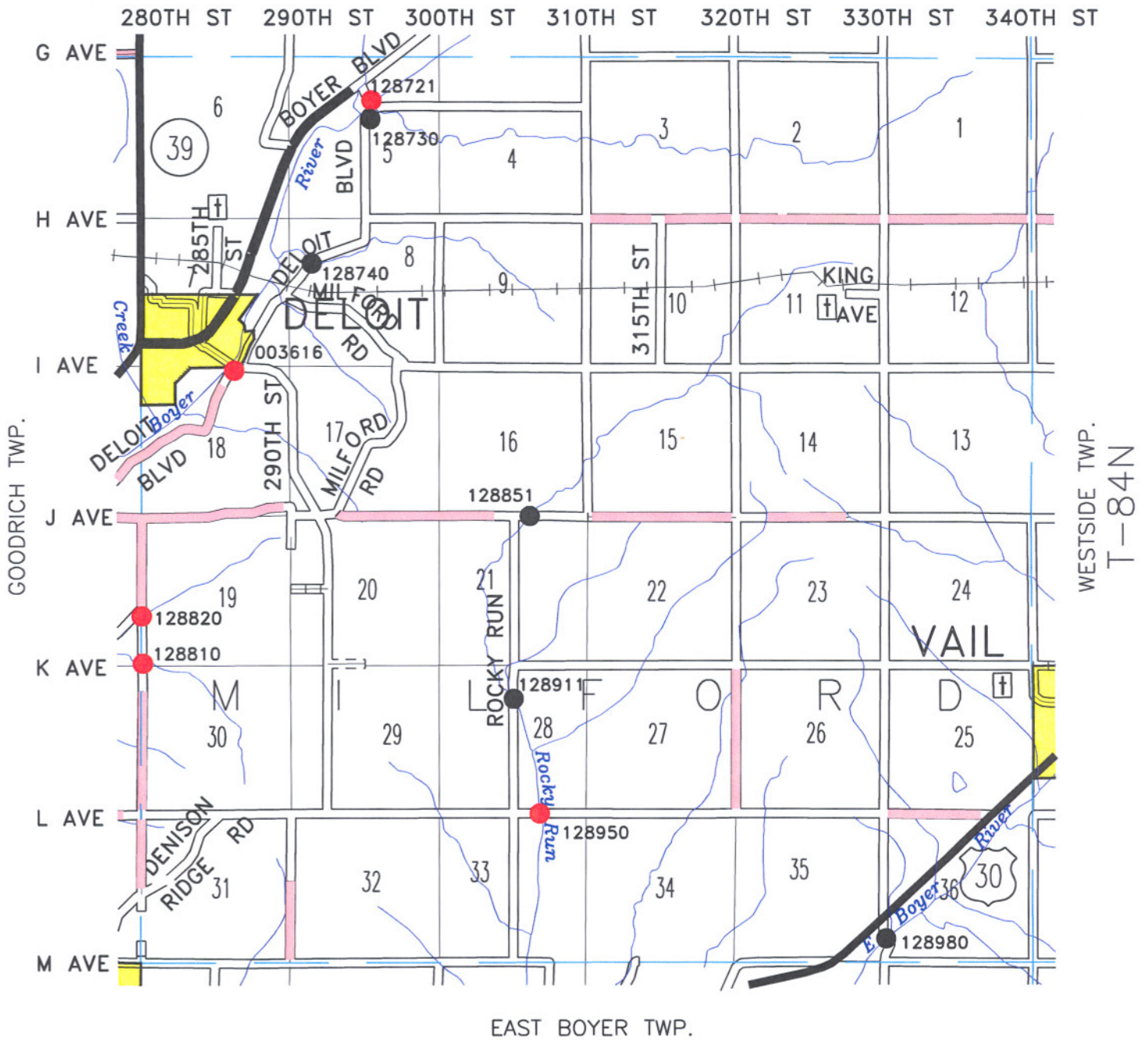


MILFORD TWP.

01/11

R-38W

STOCKHOLM TWP.



003616	24T - 39T - 38T
128721	12T - 18T - 22T
128730	LEGAL
128740	LEGAL
128810	12T - 17T - 22T
128820	26T - 39T - 40T
128851	LEGAL (STR. PLT)
128911	LEGAL (TWIN RCB)
128950	19T - 28T - 37T
128980	LEGAL

LEGEND

- LEGAL
- POSTED LOAD LIMITS
- LEVEL B ROADS
- LEVEL C ROADS