

INDEXED
 FOLLOW UP
 PLOTTED
 SCANNED

Crawford County Recorder
 Denise Meeves
Fee Book 2011-1326
 06/06/2011 @ 09:32AM
 PLC PLAT CORNER CER
 Book: Page: # Pages: 1
 Total Fees: \$9.00

PREPARED BY - TERENCE E. CRAWFORD - SUNDUQUIST ENGINEERING - 120 S. MAIN, DENISON, IOWA 51442 - PHONE (712) 263-8118

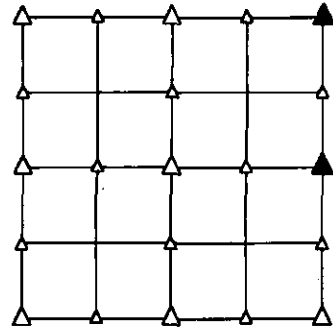
**UNITED STATES PUBLIC LAND SURVEY CORNER CERTIFICATE
 OF**

LAND SURVEY MONUMENT SITUATED IN SECTION 3, T 83 N, R 40 W OF
 THE 5TH P.M., CRAWFORD COUNTY, IOWA.
 PREVIOUSLY RECORDED IN BOOK , PAGE , OTHER

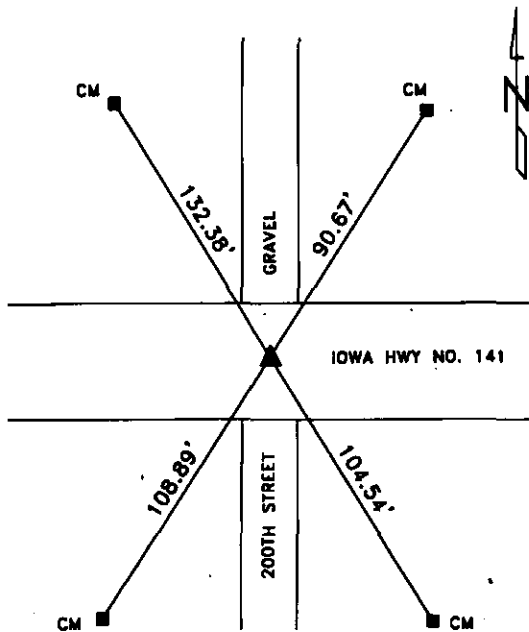
MONUMENT DESCRIPTION AND REMARKS

NE CORNER - FOUND PK NAIL IN PAVEMENT.

E1/4 CORNER - SET 5/8" DIA. X 18" IRON PIN W/YELLOW CAP
 #8893 0.4' DEEP, RESET USING OLD CORNER TIES
 AND 1976 SURVEY.

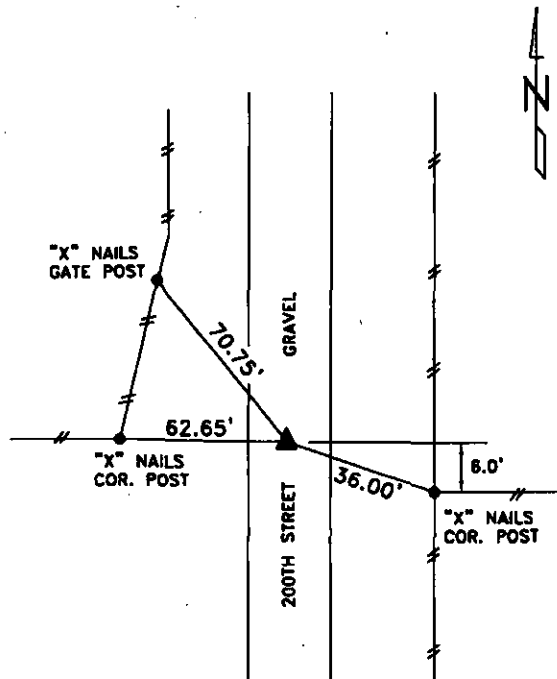


PLAN VIEW SHOWING RELATIVE LOCATION OF MONUMENT AND REFERENCE POINTS.



DISTANCES PLUMB CHAINED

NE CORNER SECTION 3-83-40



DISTANCES PLUMB CHAINED

E1/4 CORNER SECTION 3-83-40

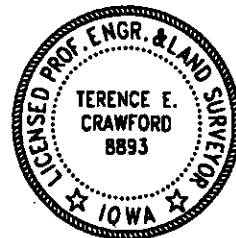
I HEREBY CERTIFY THAT THIS LAND SURVEYING DOCUMENT WAS PREPARED
 AND THE RELATED SURVEY WORK WAS PERFORMED BY ME OR UNDER MY
 DIRECT PERSONAL SUPERVISION AND THAT I AM A DULY LICENSED LAND
 SURVEYOR UNDER THE LAWS OF THE STATE OF IOWA.

Terence E. Crawford 6-2-11

 TERENCE E. CRAWFORD DATE

IA LICENSE NO. 8893

EXP. DATE DECEMBER 31, 2011



SE PROJECT NO. 21711
 DRAWN BY: LLL