

COPY

Crawford County Recorder  
Denise Meeves  
Fee Book 2009-2226  
08/20/2009 @02:45PM  
PLC PLAT CORNER CER # Pages: 1  
Book: Page: \$9.00  
Total Fees:

INDEXED W&M  
FOLLOW UP W&M  
PROOFED \_\_\_\_\_  
SCANNED \_\_\_\_\_

PREPARED BY - TERENCE E. CRAWFORD - SUNDQUIST ENGINEERING - 120 S. MAIN, DENISON, IOWA 51442 - PHONE (712) 263-8118

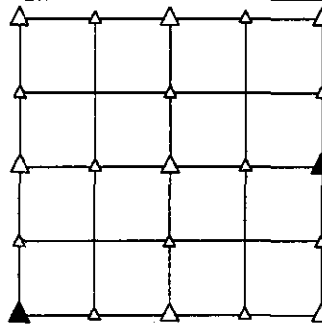
UNITED STATES PUBLIC LAND SURVEY CORNER CERTIFICATE  
OF

LAND SURVEY MONUMENT SITUATED IN SECTION 23, T 85 N, R 39 W OF  
THE 5TH P.M., CRAWFORD COUNTY, IOWA.  
PREVIOUSLY RECORDED IN BOOK \_\_\_\_\_, PAGE \_\_\_\_\_, OTHER 2001-3432

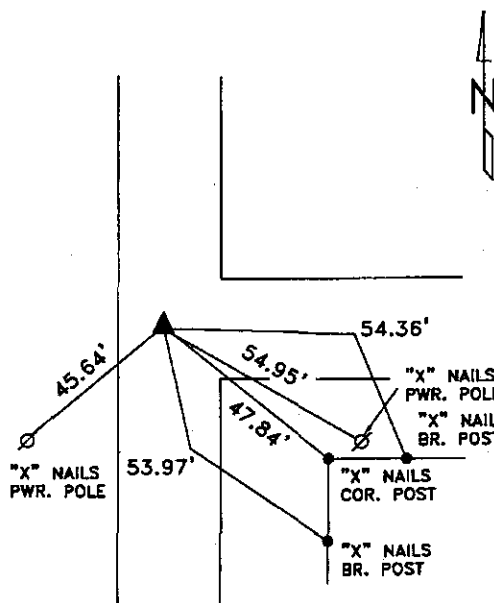
MONUMENT DESCRIPTION AND REMARKS

SW CORNER - FOUND BRIDGE SPIKE 4" DEEP.

E1/4 CORNER - FOUND IRON PIN W/RED CAP #11810 1.0' DEEP  
W/SMALL RED STEEL POST NEXT TO PIN.

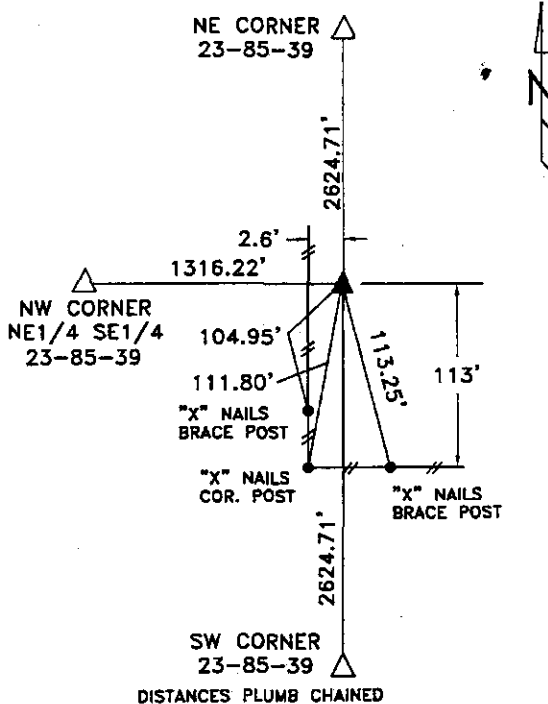


PLAN VIEW SHOWING RELATIVE LOCATION OF MONUMENT AND REFERENCE POINTS.



DISTANCES PLUMB CHAINED

SW CORNER SECTION 23-85-39



DISTANCES PLUMB CHAINED

E1/4 CORNER SECTION 23-85-39

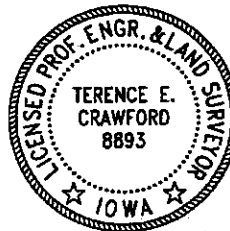
I HEREBY CERTIFY THAT THIS LAND SURVEYING DOCUMENT WAS PREPARED AND THE RELATED SURVEY WORK WAS PERFORMED BY ME OR UNDER MY DIRECT PERSONAL SUPERVISION AND THAT I AM A DULY LICENSED LAND SURVEYOR UNDER THE LAWS OF THE STATE OF IOWA.

*Terence E. Crawford*

AUG 12 2009

TERENCE E. CRAWFORD  
IA LICENSE NO. 8893

DATE  
EXP. DATE DECEMBER 31, 2009



SE PROJECT NO. 22209  
DRAWN BY: LLL